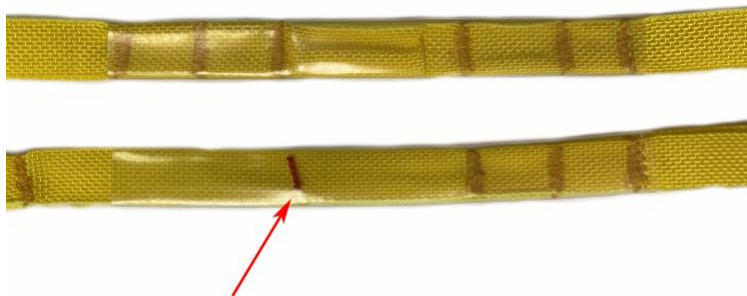




The Weak-Link is intended to be installed between the hoist hook and the upper end of the guide/trial/tag line, used in helicopter hoist operations. The Weak-Link p/n WL100 is made of UV- and water resistant special designed polypropylene webbing. There is a loop in each end for attachment to the trial/tag/guide line or a carabiner.

The Weak-Link is designed with a main link and a pre link. The pre link breaks and indicate if the weak-link has been overstressed. The main link is not affected until the breaking of the prelink

The Weak-Link WL100 has an ultimate load at 100 kg \pm 10 %. The Weak-Link is overstressed when it has been exposed for abnormal load during the hoist procedure.



The upper link in the picture to the left shows a correct weak-link and the lower shows an overstressed link with ruptures in the webbing and the red marker is shown.



Helisafe recommends replacing the Weak-Link every 3 month (Quarter). To facilitate that the Weak-Link has not been in service longer time than a Quarter, it is labeled with one color for each Quarter.